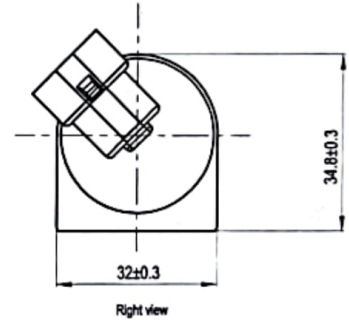
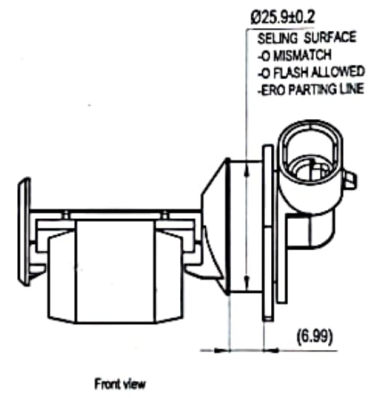
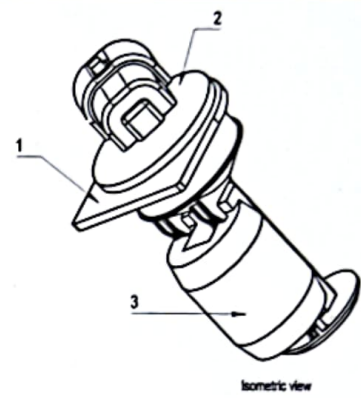
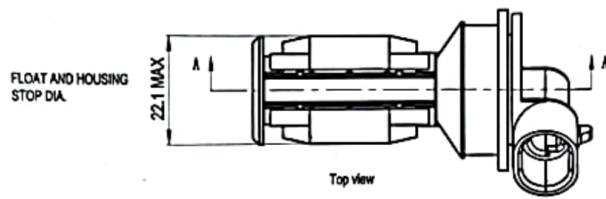
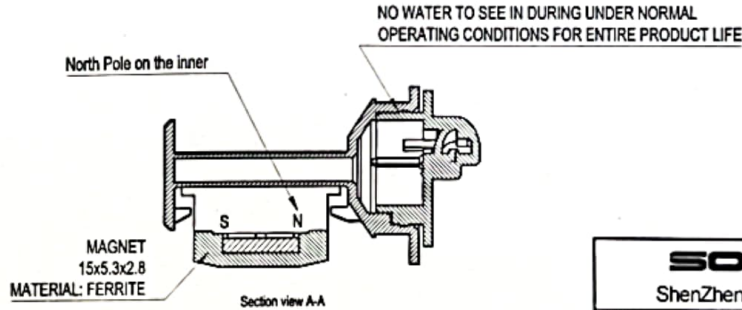


REVISION	NOTES	DATE	RELEASED
A	First Revisions	2022.10.13	WU BENG WU

Control Document
 受控文件
 VALID IN RED
 不是红色不受控
 Control No(控制号): 2023-07-06



- NOTES:**
- 1) SENSOR SHALL FUNCTION IN WINDSHIELD WASHER FLUID (50% METHYL ALCOHOL) AT TEMPERATURES FROM -30°C TO 120°C.
 - 2) SENSOR SHALL OPERATE FROM A NORMALLY OPEN (FULL FLUID LEVEL) TO A CLOSED (LOW FLUID LEVEL) POSITION. AN "ON-OFF-ON" OR "OFF-ON-OFF" SEQUENCE OF OPERATION SHALL NOT BE PERMITTED EXCEPT AS NOTED IN NOTE 3.
 - 3) FALSE OPERATION DUE TO WASHER FLUID "SLOSHING" IS PERMISSIBLE.
 - 4) WHEN SENSOR SWITCH IS OPEN, THE INSULATION RESISTANCE BETWEEN THE TERMINALS TO BE 1.0 MEGAOHMS AT 200V DC.
 - 5) THE MILLIVOLT DROP WHEN CHECKED AT THE EXTERNAL TERMINALS OF THE SENSOR SHALL NOT EXCEED 85 MILLIVOLTS WHILE CONDUCTING 10 MILLIAMPS THROUGH THE CONTACTS WITH A 13.5 VOLT DC SUPPLY.
 - 6) SENSOR CONNECTOR MATES WITH PACKARD 12162193 OR EQUIVALENT.
 - 7) TERMINAL SPECIFICATIONS: H62 Y2 T=0.8mm.
 - 8) REED SWITCH: ORD 324 30/35 AT.
 - 9) 100% END OF LTNE TESTING FOR ON/OFF FUNCTION.



BILL of Materials

S No.	Description	Material	Qty
1	Sensor Body	POM (KEPITAL P20-03) Black	1
2	Connector	POM (KEPITAL P20-03) Black	1
3	Float	PP Foam (Taihua 18009) Green	1

SODOWELL
ShenZhen XinDaoWei Technology CO.,LTD

DRAWN: <i>[Signature]</i> CHECKED: <i>[Signature]</i> DATE: 13/10-2022	DATE: 13/10-2022	DRAWING TITLE: LEVEL SENSOR	MODEL: LS-4902-01
APPR: <i>[Signature]</i> DATE: 2022-10-17		DRAWING NUMBER: LS-4902-01	ANGLE OF VIEW:
DWG. NO.		SHEET: 1 OF 1	UNIT: mm
DWG. SIZE: A3		SCALE: 1:1	SHEET: 1 OF 1